

## QUARTER-TURN ELECTRIC ACTUATOR TYPE BT

### DESCRIPTION:

The BT range of high torque quarter turn heavy duty actuators offer the possibility to operate directly on large diameter valves, without the need of an additional mechanical gearbox. Its heavy duty design insures a maintenance free very long life. It offers:

a complete self-locking gear, easy to set reliable **BERNARD** cam device, perfectly sized handwheel, precise **BERNARD** torque limit device, ISO output flange with removable socket.

### SPECIFICATIONS:

Self-locking quarter-turn, watertight body to NEMA 4, 4X & 6, proportional position indicator, **S4-30%** duty rating motor, class F insulated, 2 end of travel switches and 2 auxilliary limit switches (dry contacts) adjustable over the whole travel, 2 independently adjustable torque limit switches, anti-condensation heater, 2 adjustable mechanical stops, thermal protection, emergency handwheel mounted on the final reduction stage, 2 conduit entries, ISO F12 or **F14 standard** flange.

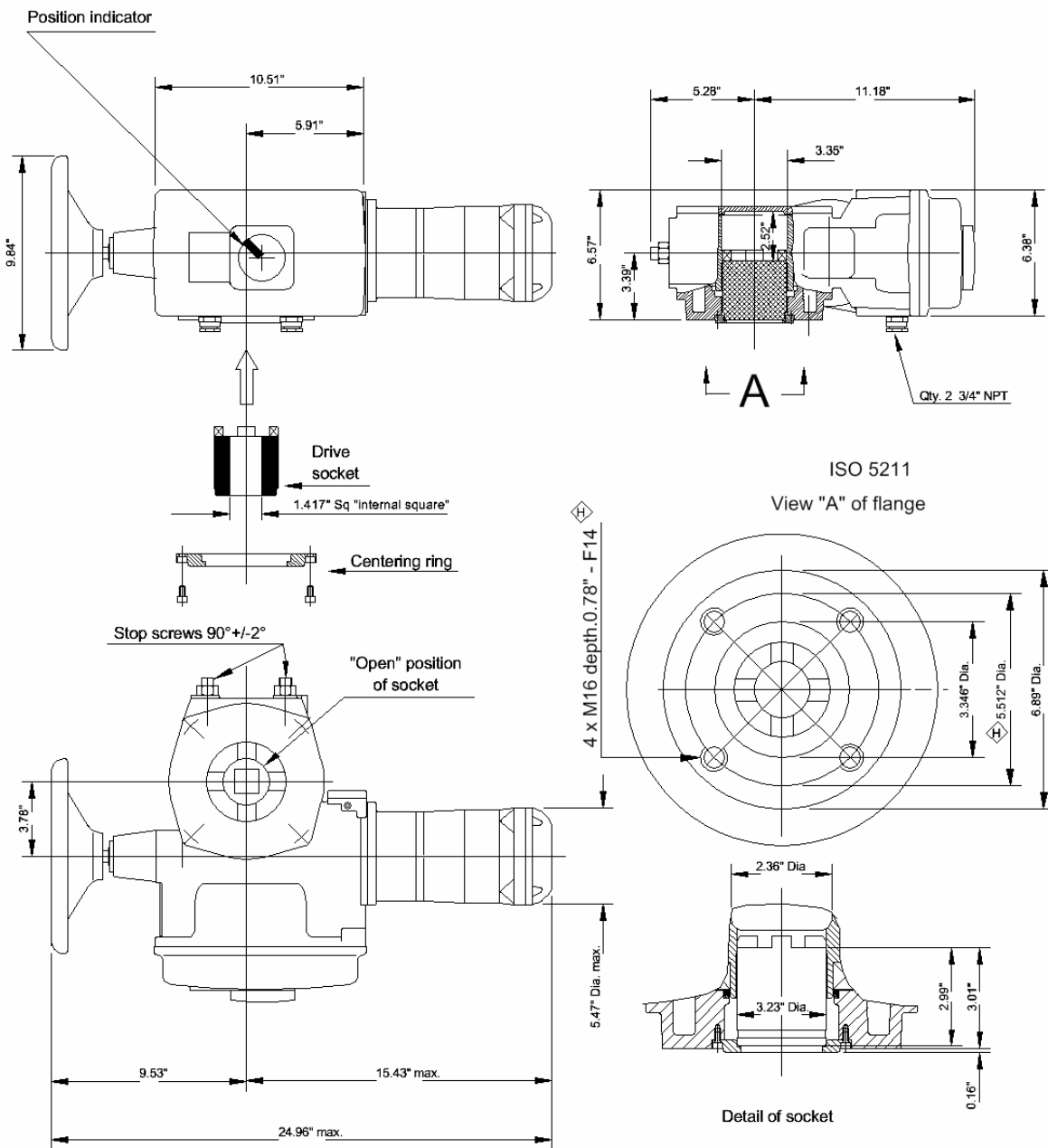
### TECHNICAL DATA

| Type  | Torque<br>in-lbs | Operating<br>time s/90° | Flange<br>ISO |
|-------|------------------|-------------------------|---------------|
| BT100 | 10,620           | 25 - 50                 | F12/14        |

### OPTIONS:

- ☞ Position sensor by potentiometer 1000 Ω
- ☞ Position transmitter 4-20 mA
- ☞ INTEGRAL+ control
- ☞ PosiGAM+ modulating
- ☞ Special needs: ask us

**DIMENSIONAL DRAWING:**



**L. BERNARD** Controls Inc.

15740 Park Row, Suite 100 - Houston, Texas 77084

Phone: 1-281-578-6666 - Fax: 1-281-578-2797 - E-mail: bsales@bernardcontrols.com